

Dear Customer,

TempoCem, TempoCem Soft and TempoCem NE are auto-mixing cements which are easy to process. They are used as temporary cements for attachment of all kinds of temporaries, e.g. temporary crowns, bridges and inlays.

TempoCem flows easily and thus allows an unobjectionable placing of the temporary. It is resistant to saliva and stable in the mouth. It withstands the stress of mastication sufficiently, but allows an easy removal of the temporary. Due to its added modifier **TempoCem Soft** is adjusted to a softer consistency. This allows easier removal for temporary crowns and bridges with very high friction. **TempoCem NE** is eugenol-free.

INDICATION

Temporary luting of provisional and permanent:

- crowns and bridges
- inlays and onlays

Corresponds to ISO 3107:1988 (Due to auto-mixing setting time has been shortened with respect to norm).

ADVANTAGES

- Automatic mixing - provides a consistent, homogeneous mix
- Direct dispensing into the temporary
- Optimal luting properties, yet easy and clean removal
- Short intraoral setting time with low heat generation
- Isolates against thermal influences

PACKAGING

Introductory kits

1 cartridge @ 63 g TempoCem, 50 mixing cannulas,
1 dispenser gun type 25 REF 110246

1 cartridge @ 63 g TempoCem NE, 50 mixing
cannulas, 1 dispenser gun type 25 REF 110269

(only USA) please use REF 110301

Refill packages

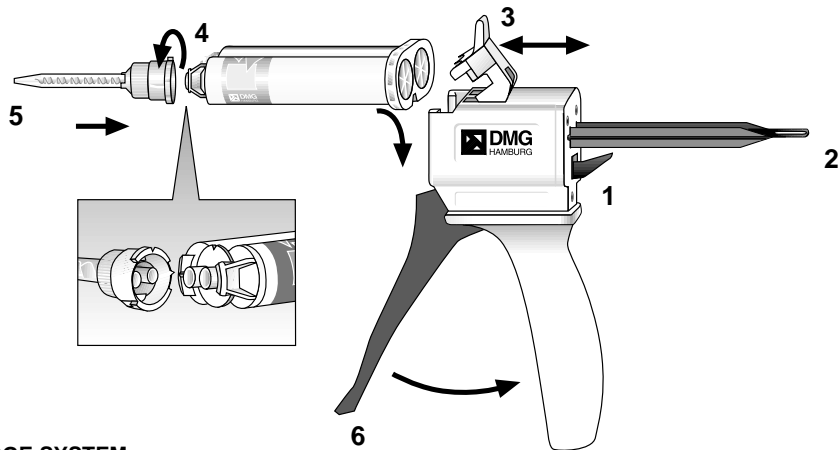
1 cartridge @ 63 g paste, 35 mixing cannulas*
TempoCem REF 110247
Tempocem Soft REF 110265
TempoCem NE REF 110272

*Not available in the USA - USA only please order:

1 cartridge @ 63 g paste + 40 mixing cannulas
TempoCem REF 110300
TempoCem Soft REF 110303
TempoCem NE REF 110302

Accessories

1 package @ 50 mixing cannulas REF 110266
1 package @ 100 mixing cannulas REF 110267
1 dispenser gun type 25 REF 110253



CARTRIDGE SYSTEM

1. Push up the small lever (1) in back of Type 25 Applicator Gun and make sure slide (2) is inserted completely into the Applicator Gun.
2. Lift plastic lever (3) on top of gun and insert cartridge. Note: Notch on bottom of the cartridge aligns with the notch on the Type 25 Applicator Gun. Push down firmly on lever (3) to lock in cartridge.
3. Before attaching mixing cannula, remove blue cartridge cap (4) by turning 90° counter clockwise, pull and remove it.

When using a cartridge for the first time, express a "pea" size amount of material and discard.

4. Leave an used cannula on the cartridge. It serves as a cap.
4. Line up the notch on the mixing cannula (5) with the corresponding notch on the cartridge. Push a new mixing cannula (5) onto the cartridge and turn it clockwise 90° until it locks into position.
5. The material is dispensed through the mixing cannula by pulling the trigger (6) of the dispenser and can be applied directly.

Removal of Cartridge

Push up lever (1) and pull slide flush (2). Lift plastic lever (3) on the top of gun and remove cartridge.

APPLICATION

1. Before cementation the surface of the restored teeth must be cleaned (e.g. with pumice powder and water).
2. Apply TempoCem into the dry temporary crown or bridge.
3. Affix with low pressure to the prepared tooth.

	Working Time (at room temperature)	Setting Time (in the mouth)
TempoCem	≈ 1 minute	≈ 1 minute
Tempocem Soft	≈ 2:30 minutes	≈ 3 minutes
TempoCem NE	≈ 1 minute	≈ 2-3 minutes

CLEAN-UP

Excess material can be easily removed with an explorer in big chunks. Interdentally excess is removed by careful flossing. The light colour of the material makes it clearly distinguishable from teeth. Residues can be removed with orange solvent.

IMPORTANT NOTES

Do not use TempoCem in case of a known allergy against eugenol or another component. Certain studies assume a correlation between eugenol and pulp damages. Therefore check the necessity of a pulp protection in each individual case. Cements containing eugenol can inhibit the polymerization of composites, resin-based luting cements and bonds. Therefore, please check if the use of the eugenol-free, auto-mixing temporary cement TempoCem NE is advantageous.

COMPOSITION

TempoCem/TempoCem Soft
Catalyst paste: Natural resins, eugenol, additives
Base paste: Zink oxyde, paraffin, additives

TempoCem NE
Catalyst paste: Natural resins, fatty acids, additives
Base paste: Zink oxyde, paraffin, additives

STORAGE

TempoCem/TempoCem Soft
Store at cool temperature (50 to 73 °C/10 to 23 °F), but let it warm up to room temperature (64 to 73 °F/ 18 to 23 °C) before use!

TempoCem NE
Store at room temperature (64 to 73 °F/ 18 to 23 °C).

Do not use after expiration date!

**Exclusively Distributed in the United States and Canada by:
Zenith Brands Division of Foremost Dental Mfg. Co., Inc.
Telephone number: 1-800-662-6383**

Federal law (USA) restricts this device to sale by, or on the order of a dentist, or other practitioner licensed by law of the state in which he or she practices to use or order the use of this device.

Keep away from children! For dental use only!